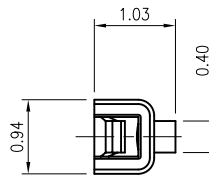
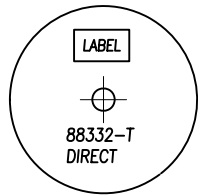
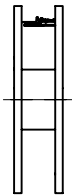
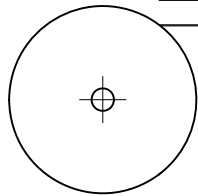


出料方向

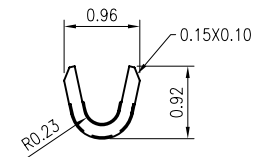
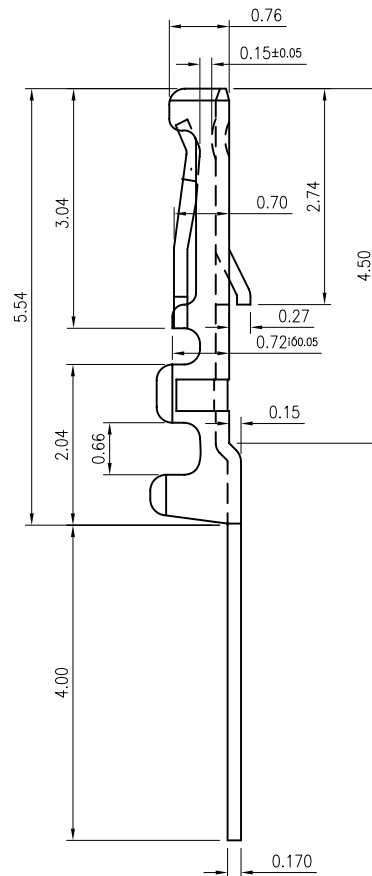


NOTES:

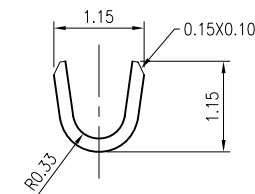
1. MATERIAL: PHOSPHOR BRONZE, THICKNESS 0.17±0.01
2. PLATING
50u" MIN NICKEL PLATING OVERALL
1: GOLD FLASH ON PLATED AREA
L: 80~120u" MIN PURE TIN ON PLATED AREA
3. ALL UNSPECIFIED CORNERS AND RADIUS NOT TO EXCEED R0.1mm
4. ALLOWABLE CAMBER IS 3/300 mm LENGTH AND MAX.
5. ALLOWABLE TWIST IS 90° PER 1000mm
6. THE BURR IS 0.03mm MAX. AROUND ALL EDGES
7. APPLICABLE WIRE: UL10064 AWG#34/7C OD: 0.40±0.02mm.
UL10064 AWG#34/7C OD: 0.32±0.01mm.
8. PART NUMBER

88332-T0 1 X

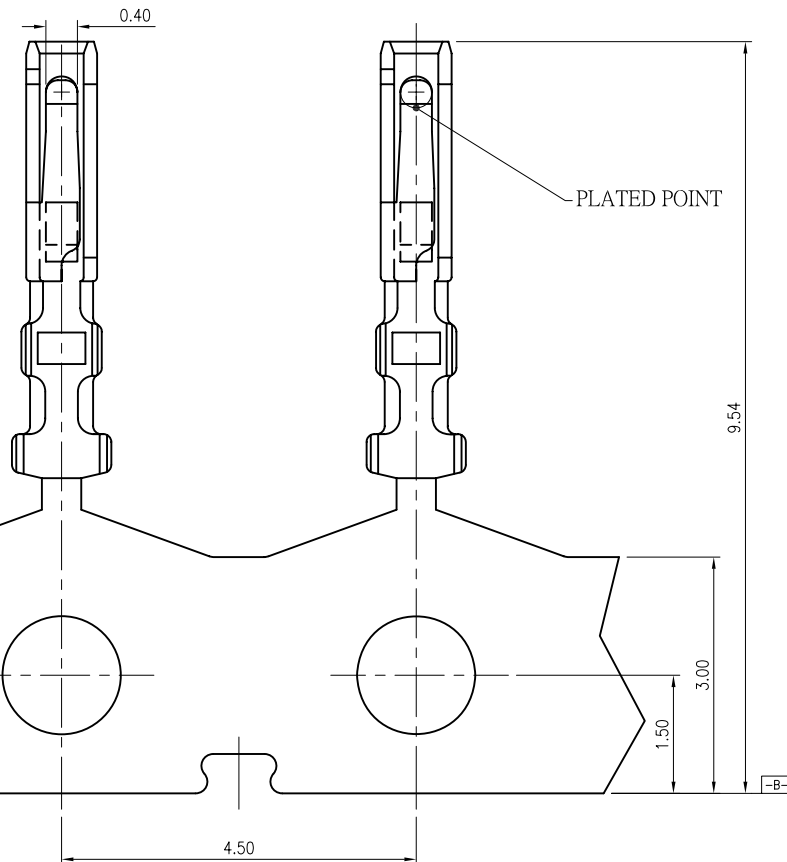
Plating:
1: GOLD FLASH OVERALL
L: PURE TIN
9: NONE PLATING



WIRE BARREL



INSULATION BARREL



一般公差 TOLERANCES X ±0.50 .XX ±0.15 X ±0.25 .XXX ±0.10 ANGLES ±2°		宏致電子股份有限公司 Aces Electronic Co.,Ltd.	
檢驗尺寸標示 SYMBOLS INDICATE CLASSIFICATION DIMENSION MARK IS CRITICAL DIM. MARK IS MAJOR DIM.	品名 (TITLE) 1.25mm WTB TERMINAL	製圖 (DR) 12/09/27 Wan.Bo 審核 (CHKD) SAM	5
	圖號 (DWG.NO) 88332-T0XX	核准 (APPD) JASON	
表面處理 (FINISH)	比例 (SCALE) 單位 (UNITS) 10:1 mm	張數 (SHEET) 1 OF 1	SIZE REV A4 C